



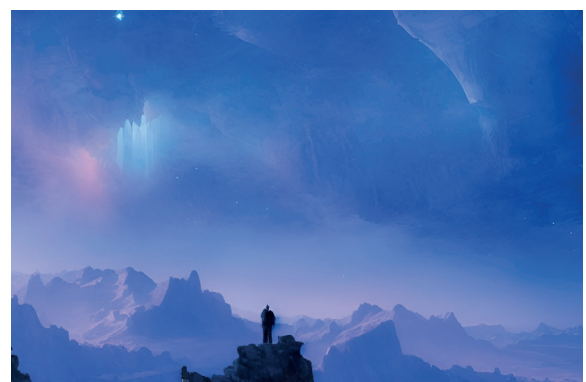
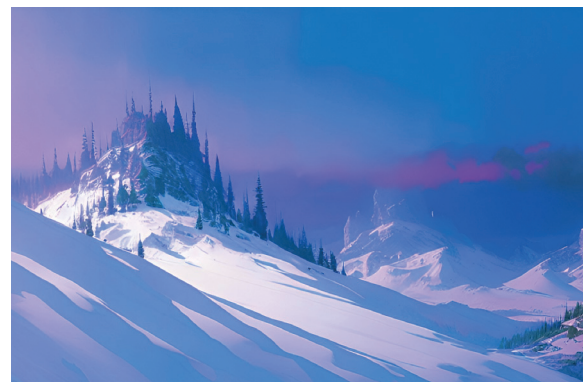
# vReiki Practitioner

Complementary Therapies based upon the concept of Ki (and the Chinese equivalent, Chi) use a system of discreet energetic channels that exist in the human. These are known as meridians and are integral to our holistic health and wellbeing. It is with these meridians that we begin our exploration of Reiki and other Life Forces when used in therapeutic practice.

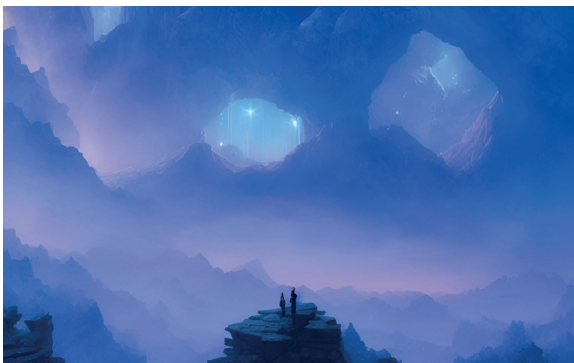
As you move your worldview away from the meridians as conduits for the 'flow of Reiki', you will transform your perspective to understanding that it is you flowing through the Universal Constant of Reiki. This profound shift in ethos reveals how you sense Reiki as you flowing through life, through the Universe.

With an understanding of all the main meridians and 'pressure points' along these channels, we see how our basic treatments can be tailored to specific dis-eases and issues. Incorporating the traditional treatments of Reiki therapy and gentle meridian massage, we then turn our attention to more specific forms of energetic pressure point stimulation.

With an understanding of Eastern Meridian Anatomy, we subsequently look at other cultural aspects of energy work, understanding how these affect us in a metaphysical style of therapeutic practice. Then we continue by understanding similarities between ancient traditions in energetic anatomy and the physiology of Western medicine, including the nervous system, endocrine system, bioenergetic/EMF fields, and other anatomical concepts.



# vReiki Practitioner



You then explore the practitioner's ability to change various aspects of Ki and mould an immense variety of therapeutic treatments. Having established modes of changing Reiki perspective, you will know how this can be translated to Jiki, Denki (Ki of Thunder), and Kuki (Ki of Air) and Mizuke (Ki of Water), to get the greatest therapeutic value, whilst specifically tailoring treatment to the need of your clients.



Progressing from the various orientation processes and study of these five facets of Ki, we then look to areas of practice beyond therapeutic treatment of the self and others. Here we see how our intuitive and psychic abilities can be used to assist us in professional and everyday life, forming a more integral link to the facet of Jiki, to work beyond the boundaries of the physical body.



This theme continues with a study of Denki enabled practices, seeing how techniques such as Psychic Surgery and 'Non-touch', Physical Massage can be carried out. You will also work with Kuki and Reiki in sub-aural techniques to create further levels of treatment range and beneficial effects.

The training also explores consultation practise, whereby you can prepare prescriptive treatments according to specific issue, or disease for your clients. We also discuss the setting up of a therapeutic business and other factors that you may encounter in your new practice.

# vReiki Practitioner: Course Contents

- The Meridian System: Meridians and Pressure Points
- The Anatomy Eastern Medicine
- Blood Cleansing and other Traditional Usui Reiki Techniques
- Pressure Point Stimulation with Jiki
- Contrasting Philosophy of Energy Systems
- The Physiology of Energy Medicine
- Tradition Practitioner Techniques
- The Traditional and Developed Treatment Tools
- Denki: The Ki of Thunder
- Kuki: The Ki of Air
- Psychic Development & Intuitive Practice for Treatment
- Denki Psychic Surgery and Non-Touch Massage
- Contraindications
- Consultations and Prescription
- Setting Up Practice & Developing Your Therapy
- Degree Two Reiki Orientation (Attunements) x2
- Degree Two Jiki Orientation (Attunements) x2
- Degree Two Denki Orientation (Attunements) x2
- Degree Two Kuki Orientation (Attunements) x2
- Degree Two Mizuke Orientation (Attunements) x2
- Additional Traditional Attunements & Empowerments
- Originator Accredited Training
- Study with Guidance from the Creator of vReiki, Martyn Pentecost
- Fully Immersive Extended Reality Training Environment
- Printed Course Books
- Access to the latest media and exclusive Practitioner Access to Romanknowes

**Visit:**  
[vreiki.com](http://vreiki.com)  
[celtic-reiki.com](http://celtic-reiki.com)